

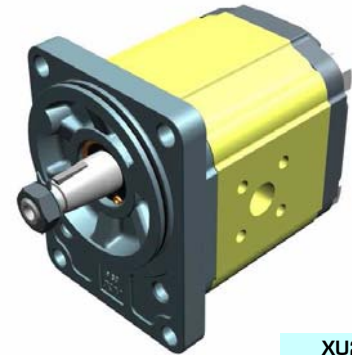
unidirectional motor - series XV

XV-2U

STANDARD GERMAN MOTOR
ø80 FLANGE - TAPER SHAFT

X 2 U 51 42 F S R A

Series	X	series XV
Group	2	group 2
Category	U	unidirectional motor
Displacement	51	17
Flange	42	Ø80 GERMAN STANDARDIZED right rotation (with OR)
Shaft	F	CO002 - Tapered 1:5 - ø17.4 - M12x1.5 - key thk.3
Body	IN	inlet - Ø40 a 45° Ø20 M6
	OUT	outlet - Ø35 a 45° Ø15 M6
Cover	A	standard



XU217

Technical data table

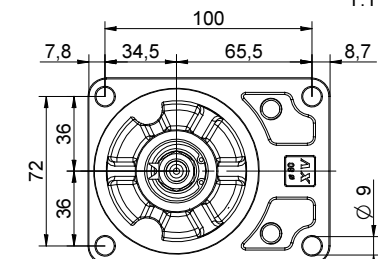
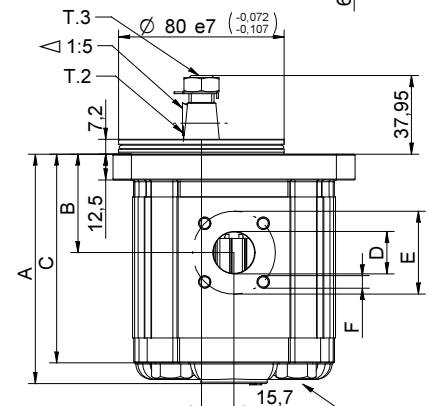
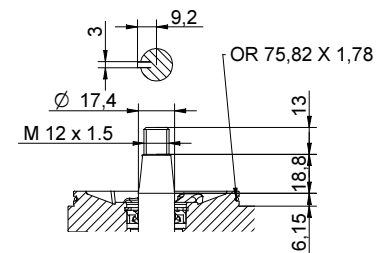
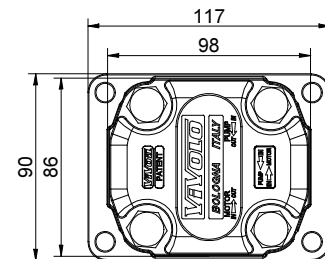
TYPE	Displacement cm3/rev	Max. Pressure		CODE	
		P1 bar	P3 bar	Left rotation	Right rotation
XV-2U/04	4,20	260	300	X 2 U 41 41 F S R A	X 2 U 41 42 F S R A
XV-2U/06	6,00	260	300	X 2 U 43 41 F S R A	X 2 U 43 42 F S R A
XV-2U/09	8,40	260	300	X 2 U 45 41 F S R A	X 2 U 45 42 F S R A
XV-2U/11	10,80	260	300	X 2 U 47 41 F S R A	X 2 U 47 42 F S R A
XV-2U/14	14,40	250	290	X 2 U 49 41 F S R A	X 2 U 49 42 F S R A
XV-2U/17	16,80	230	270	X 2 U 51 41 F S R A	X 2 U 51 42 F S R A
XV-2U/19	19,20	210	250	X 2 U 53 41 F S R A	X 2 U 53 42 F S R A
XV-2U/22	22,80	200	240	X 2 U 55 41 F S R A	X 2 U 55 42 F S R A
XV-2U/26	26,20	170	210	X 2 U 57 41 F S R A	X 2 U 57 42 F S R A
XV-2U/30	30,00	160	200	X 2 U 59 41 F S S A	X 2 U 59 42 F S S A
XV-2U/34	34,20	150	190	X 2 U 61 41 F S S A	X 2 U 61 42 F S S A
XV-2U/40	39,60	140	180	X 2 U 63 41 F S S A	X 2 U 63 42 F S S A

P1) Max. working pressure - P3) Max. peak pressure

For heavy-duty applications, it is recommended to check the admissible torque of the shaft

Dimensions table

TYPE	Weight kg	A	B	C	D	E	F	D	E	F
		mm	mm	mm	IN			OUT		
XV-2U/04	2,330	89,7	41,1	79,7	ø15	35	M6x1	ø20	40	M6x1
XV-2U/06	2,430	92,7	41,1	82,7	ø15	35	M6x1	ø20	40	M6x2
XV-2U/09	2,530	96,7	43,1	86,7	ø15	35	M6x1	ø20	40	M6x3
XV-2U/11	2,630	100,7	47,5	90,7	ø15	35	M6x1	ø20	40	M6x4
XV-2U/14	2,730	106,7	47,5	96,7	ø15	35	M6x1	ø20	40	M6x5
XV-2U/17	2,830	110,7	47,5	100,7	ø15	35	M6x1	ø20	40	M6x6
XV-2U/19	2,930	114,7	47,5	104,7	ø15	35	M6x1	ø20	40	M6x7
XV-2U/22	3,180	120,7	55,0	110,7	ø15	35	M6x1	ø20	40	M6x8
XV-2U/26	3,280	124,7	55,0	114,7	ø15	35	M6x1	ø20	40	M6x9
XV-2U/30	3,530	132,7	63,2	122,7	ø20	40	M6x1	ø20	40	M6x10
XV-2U/34	3,730	139,7	63,2	129,7	ø20	40	M6x1	ø20	40	M6x11
XV-2U/40	3,930	148,7	63,2	138,7	ø20	40	M6x1	ø20	40	M6x12



26/08/04 X2P5 1/2 F S R A diff

T.1 = 54÷58.9 [Nm] - screw tightening torque M10

T.3 = 40 [Nm] - torque wrench setting 19

T.2 = 233.2 [Nm] - admissible shaft torque (N.B. When choosing a shaft, always check the admissible torque).

Table of variations

XV-2U

ø80 FLANGE

ø80 FLANGE		Shaft		Cover	
Left rotation	Right rotation			Left rotation	Right rotation
		CI001 - Parallel T.2 = 44.1 [Nm]	CI002 - Parallel T.2 = 67.5 [Nm]		
41	42	A	B	A	A
		CO001 - Tapered T.2 = 233.2 [Nm]	CO002 - Tapered T.2 = 233.2 [Nm]		
		E	F	B	B
		SCF03 - Splined T.2 = 86.1 [Nm]			
		H		C	C
				D	D
				N	N
				O	O
				Z	Z

Displacement		Standard bodies							
TYPE	CODE	Displacement cm3/rev	Standard threads						
XV-2U/04	41	4	O - O	S - R	B - B	L - M	Z - Z		
XV-2U/06	43	6	O - O	S - R	B - B	L - M	Z - Z		
XV-2U/09	45	9	O - O	S - R	B - B	L - M	Z - Z		
XV-2U/11	47	11	O - O	S - R	B - B	L - M	Z - Z		
XV-2U/14	49	14	P - O	S - R	C - B	L - M	Z - Z		
XV-2U/17	51	17	P - O	S - R	C - B	L - M	Z - Z		
XV-2U/19	53	19	P - O	S - R	C - B	L - M	Z - Z		
XV-2U/22	55	22	P - O	S - R	C - B	L - M	Z - Z		
XV-2U/26	57	26	Q - P	S - R	D - C	L - M	Z - Z		
XV-2U/30	59	30	Q - P	S - S	D - C	L - M	Z - Z		
XV-2U/34	61	34	Q - P	S - S	D - C	L - M	Z - Z		
XV-2U/40	63	40	Q - P	S - S	D - C	L - M	Z - Z		

Table showing standard flange and thread combinations available in stock

Body (threads/flanges)													
	A		B		C		D		E		F		G
	H		I		L		M		N		O		P
	Q		R		S		T		U		V		Z